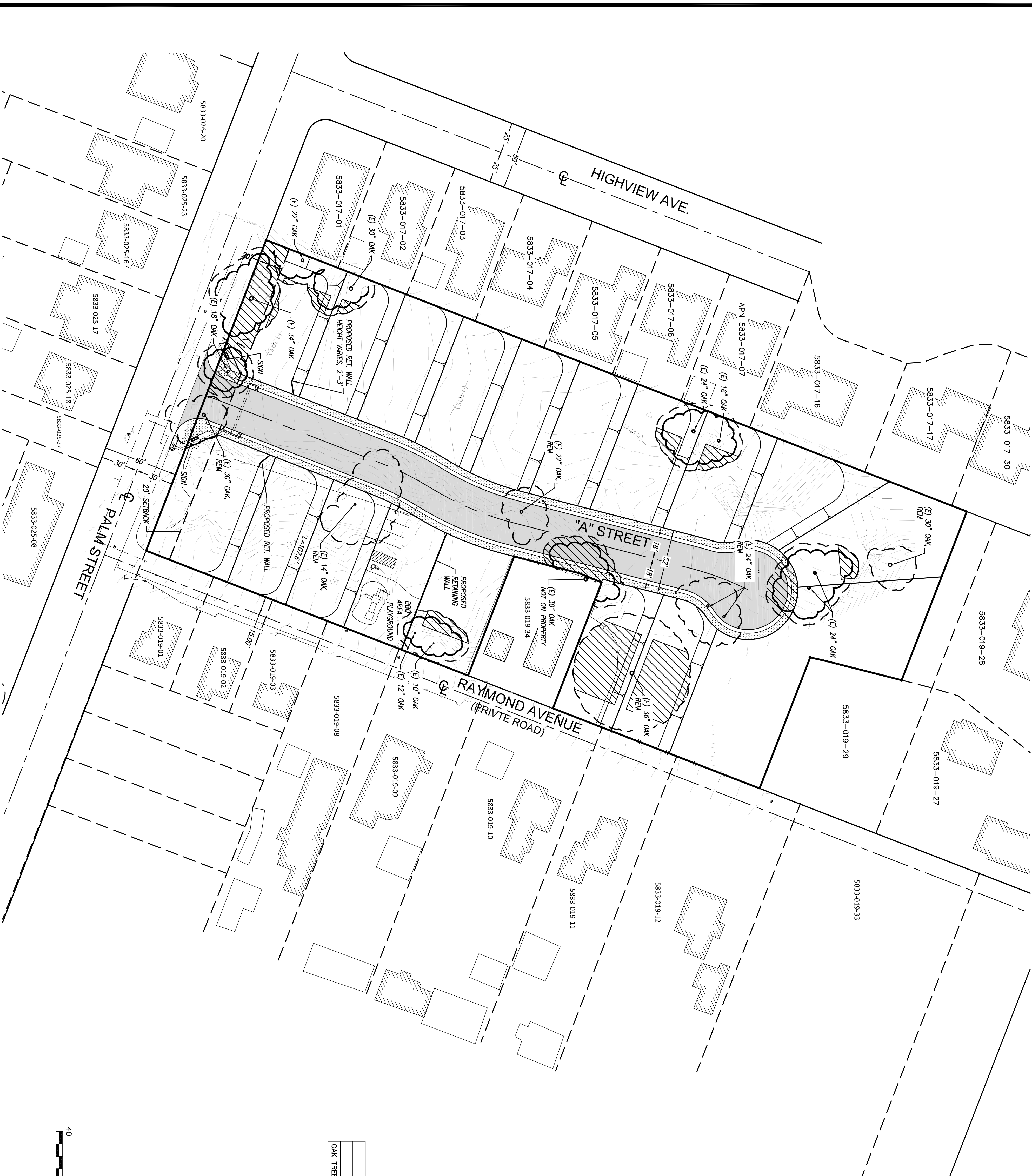
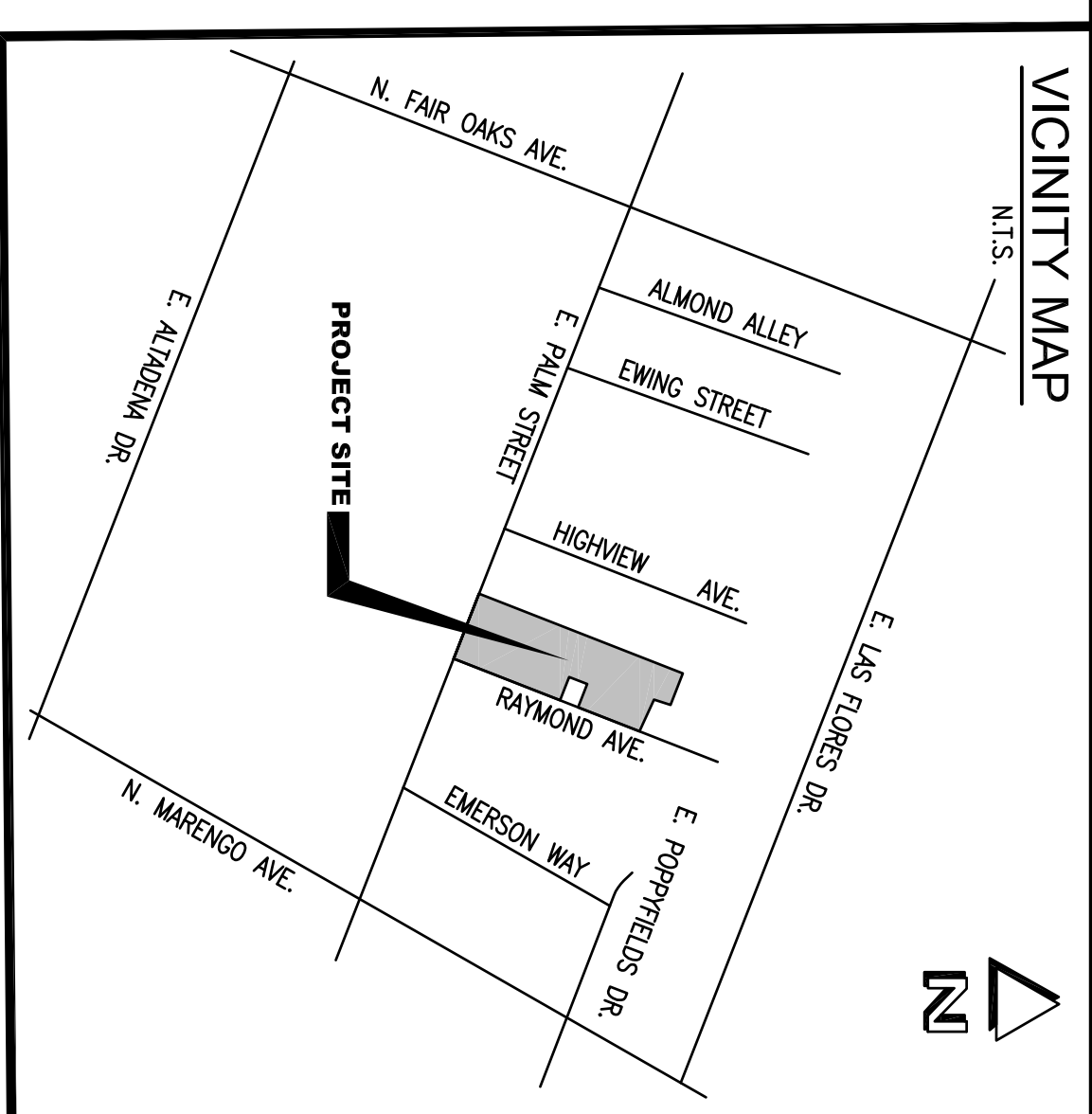
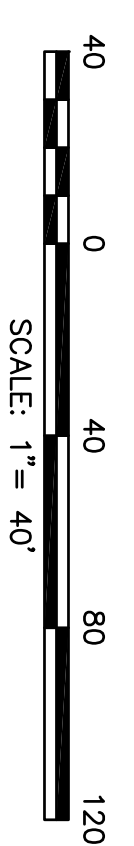


EXISTING OAK TREE EXHIBIT

PALM HEIGHTS
183 E. PALM AVENUE ALTADENA, CA



TREE CHART			
OAK TREE	PROTECT	REMOVE	TOTAL
	10	7	17



NOTE
ONLY TREES EXCEEDING 10" IN TREE TRUNK DIAMETER ARE SHOWN

- LEGEND**
- (E) EXISTING
 - REM REMOVE EXISTING TREE
 - EXISTING OAK TREE TO BE REMOVED
 - PROTECTED ZONE
 - EXISTING OAK TREE TO REMAIN PROTECTED IN PLACE
 - EXISTING STRUCTURES
 - PROPOSED MEANDERING SIDEWALK
 - PROPOSED STREET (AC PAVING)
 - PROBABLE ENCROACHMENT AREA

BRNADIMAN TEL: (909) 885-3806
JOSEPH E. BONADIMAN & ASSOCIATES, INC.
 ENGINEERS • G.I.S. • SURVEYING • PLANNING
 224 NORTH ARROWHEAD AVE
 SAN BERNARDINO, CA 92408
 FAX: (909) 381-1721
 www.bradiman.com

EXISTING OAK TREE EXHIBIT
 183 E. PALM AVENUE
 ALTADENA, CA
 APN: 5833-019-31, 35

NO	DESCRIPTION	BY	APPROVED	DATE
REVISIONS				

PREPARED FOR: PALM HEIGHTS DEVELOPMENT, INC.
 DRAWN BY: MR SCALE: 1" = 40'
 CHECKED BY: EB JOB NO.: 13923 SHEET: 1 OF 1
DISCREPANCY PRINTS BEARING EARLIER REVISION DATES

C1